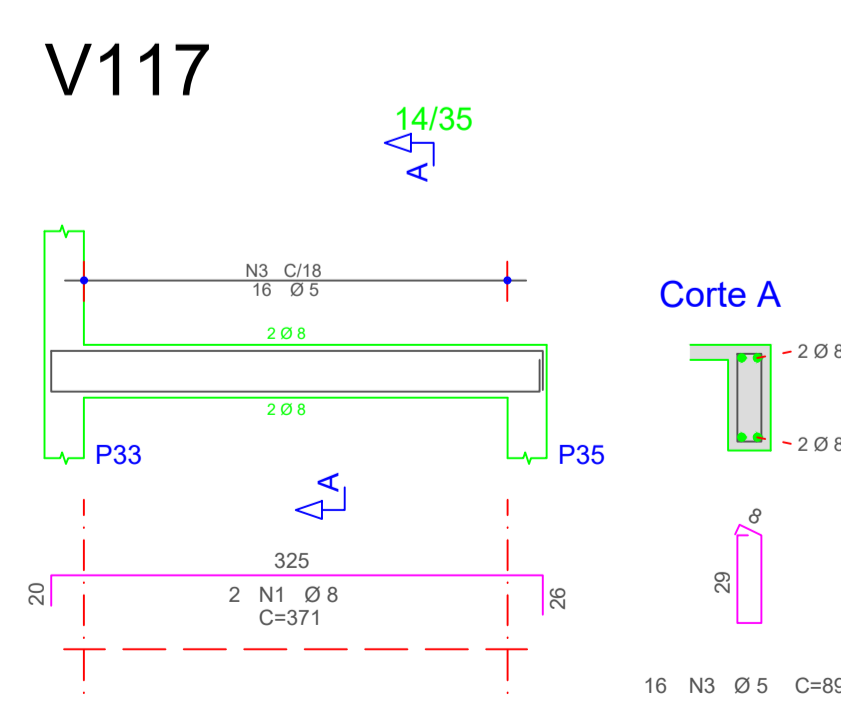
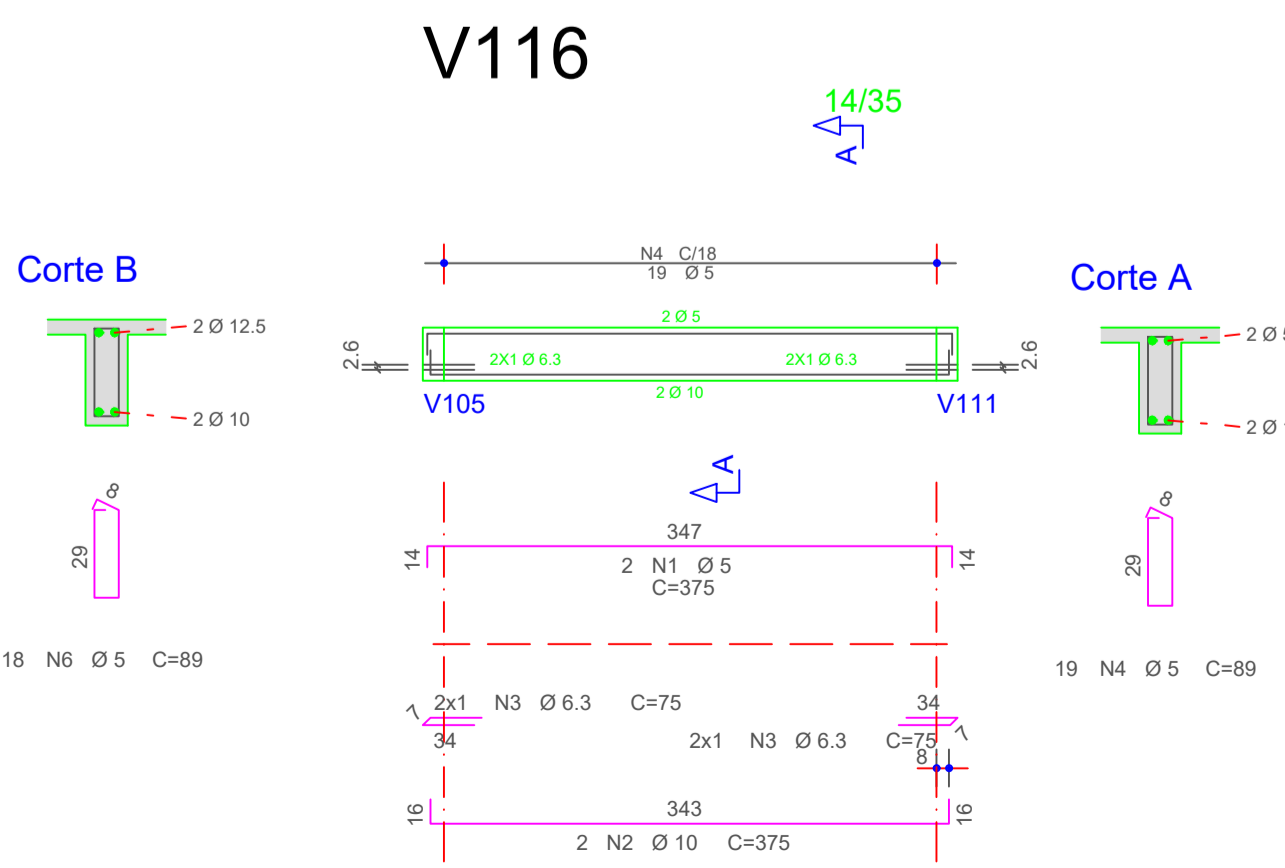
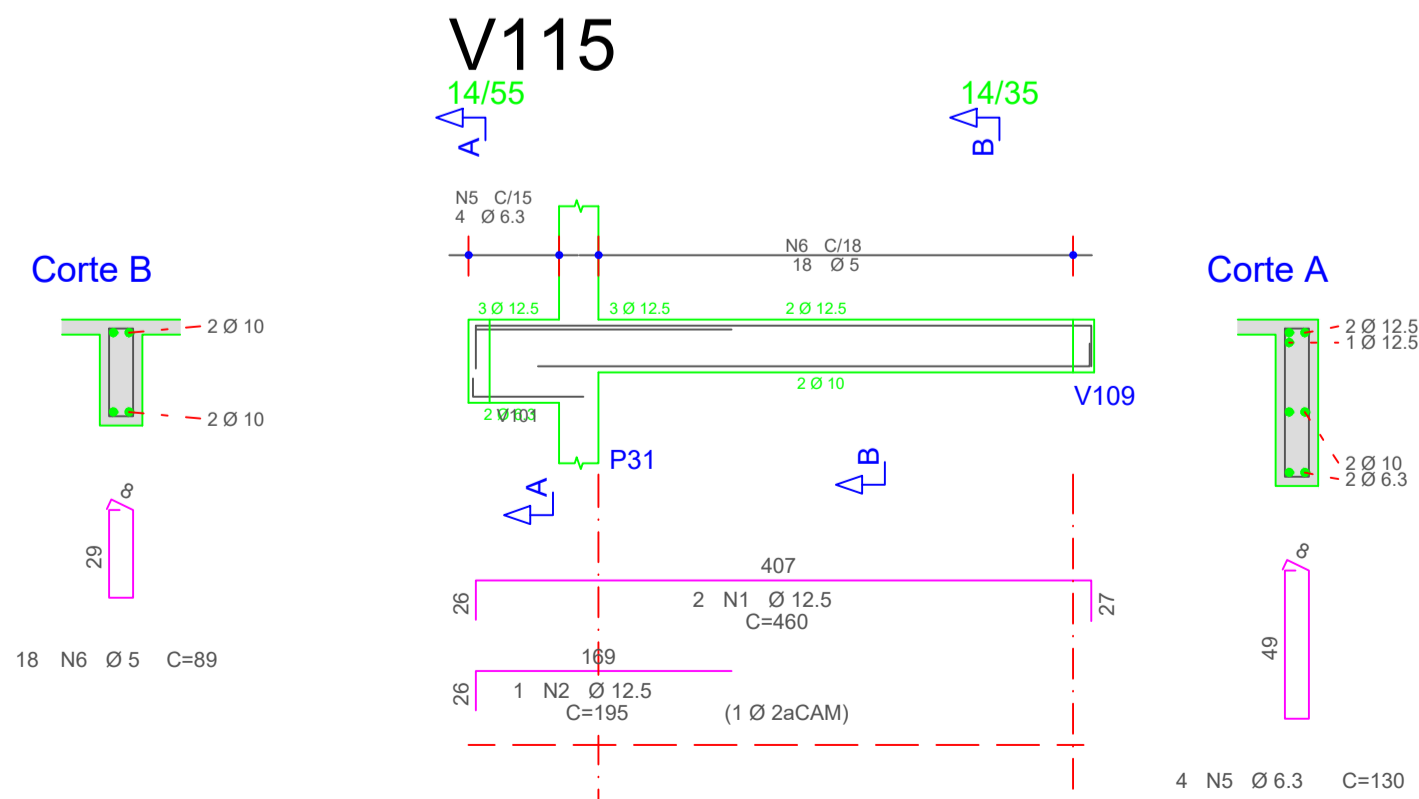
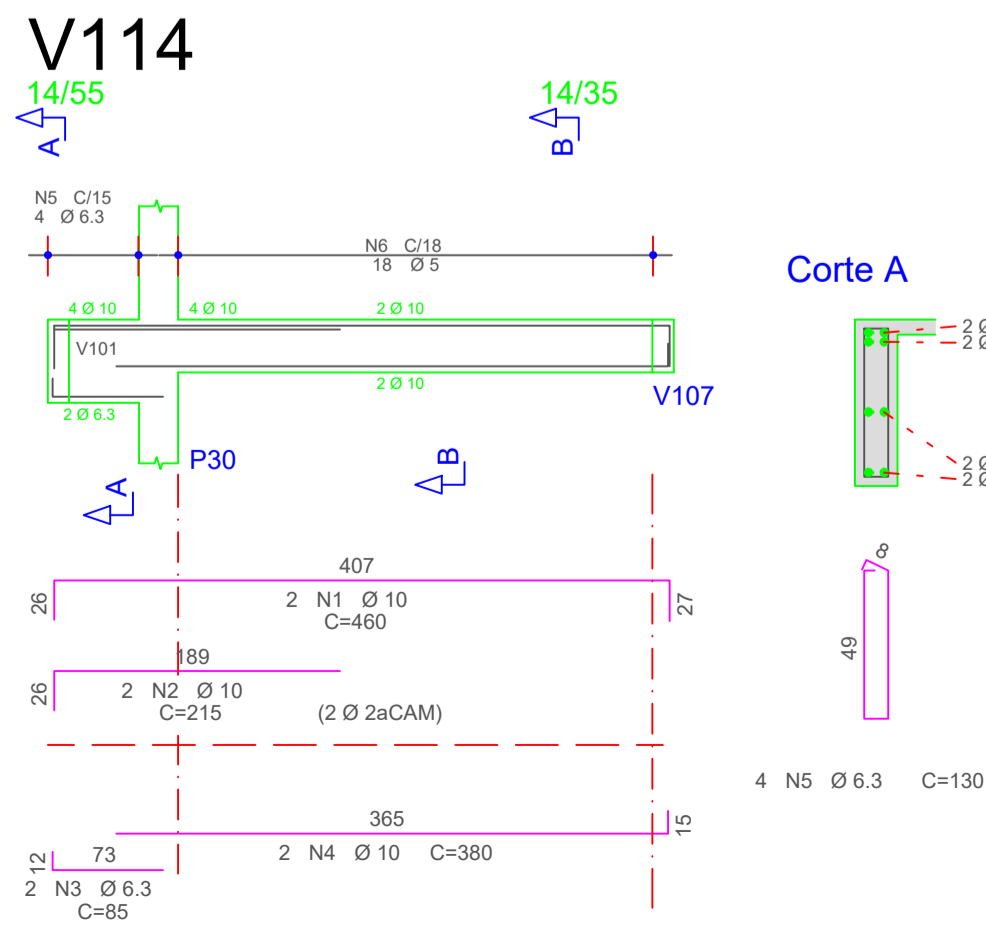
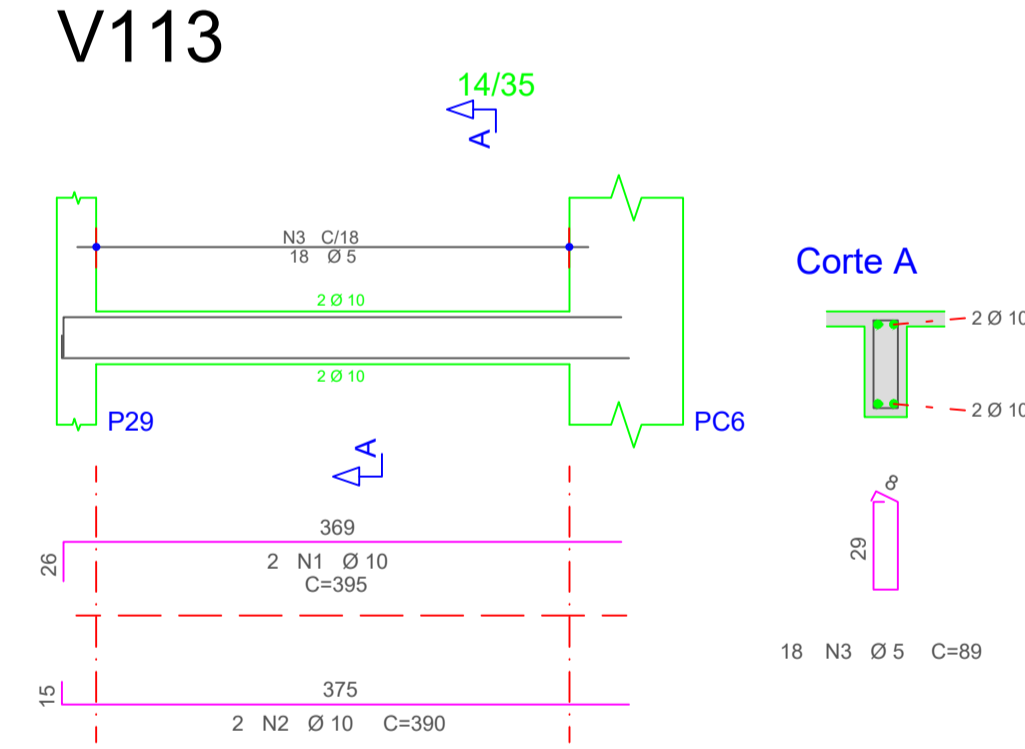
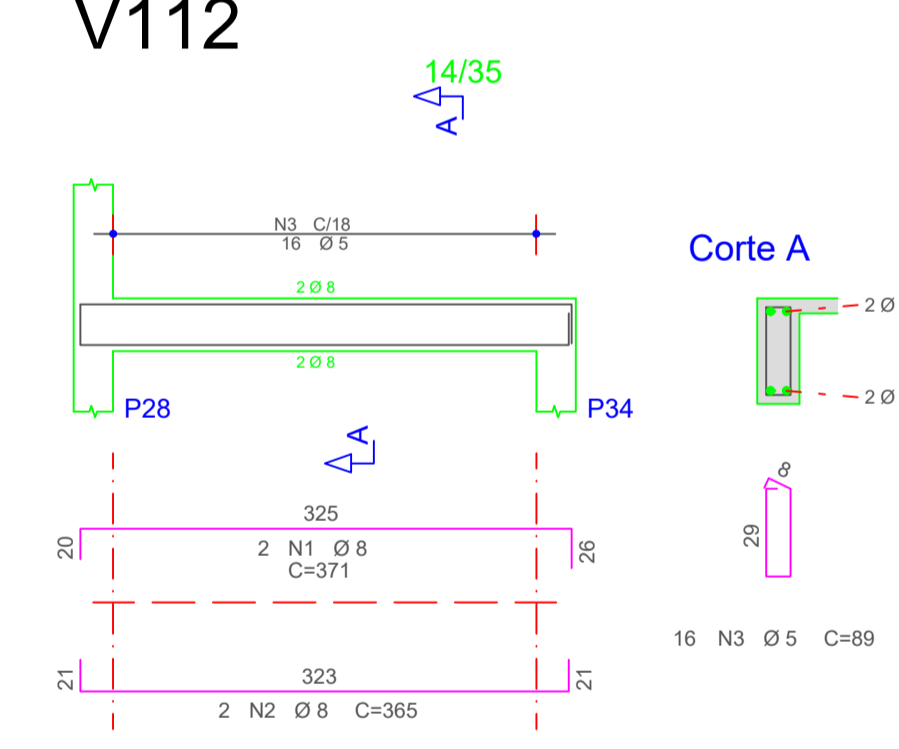
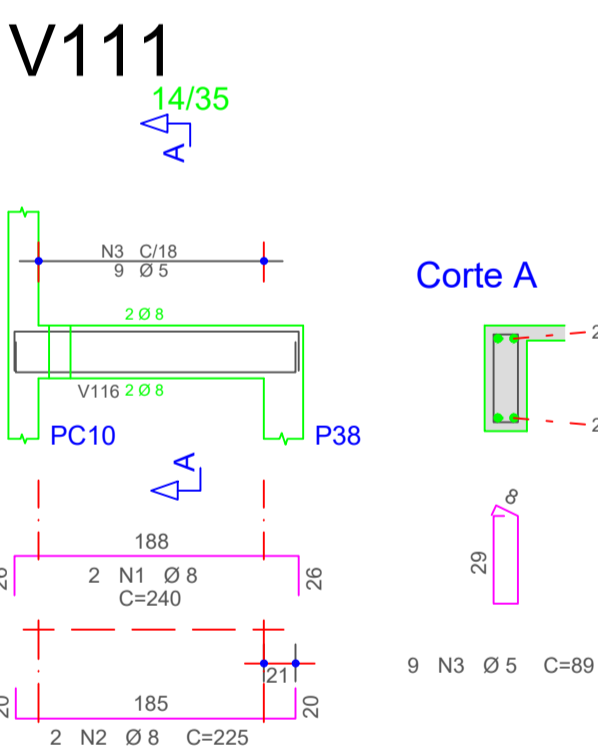
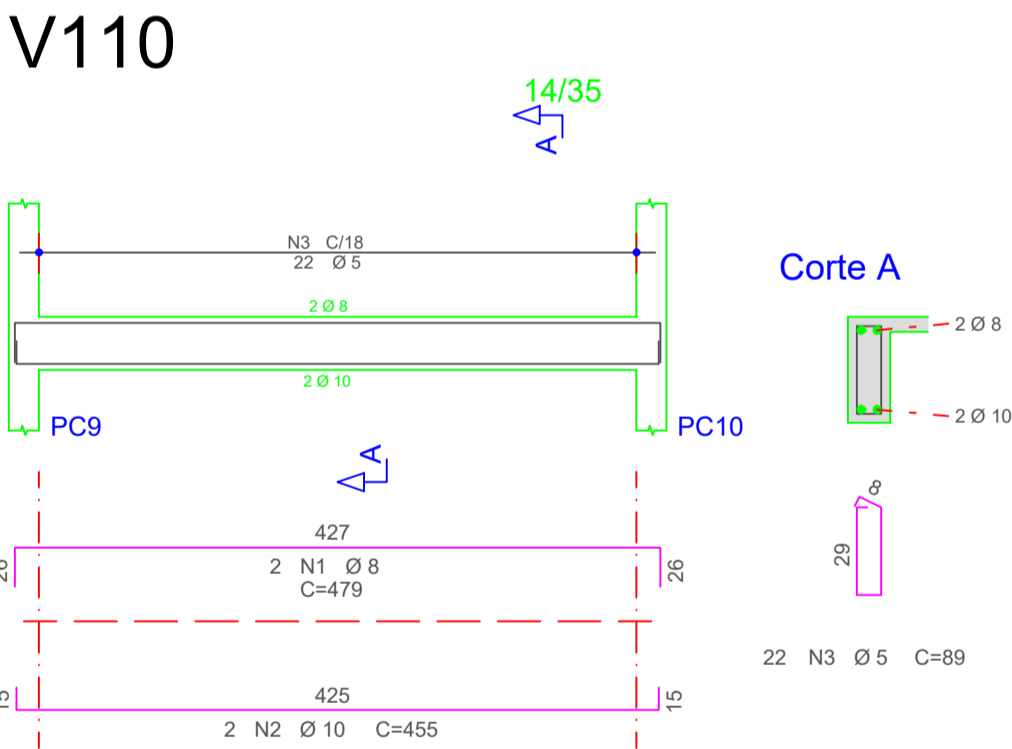
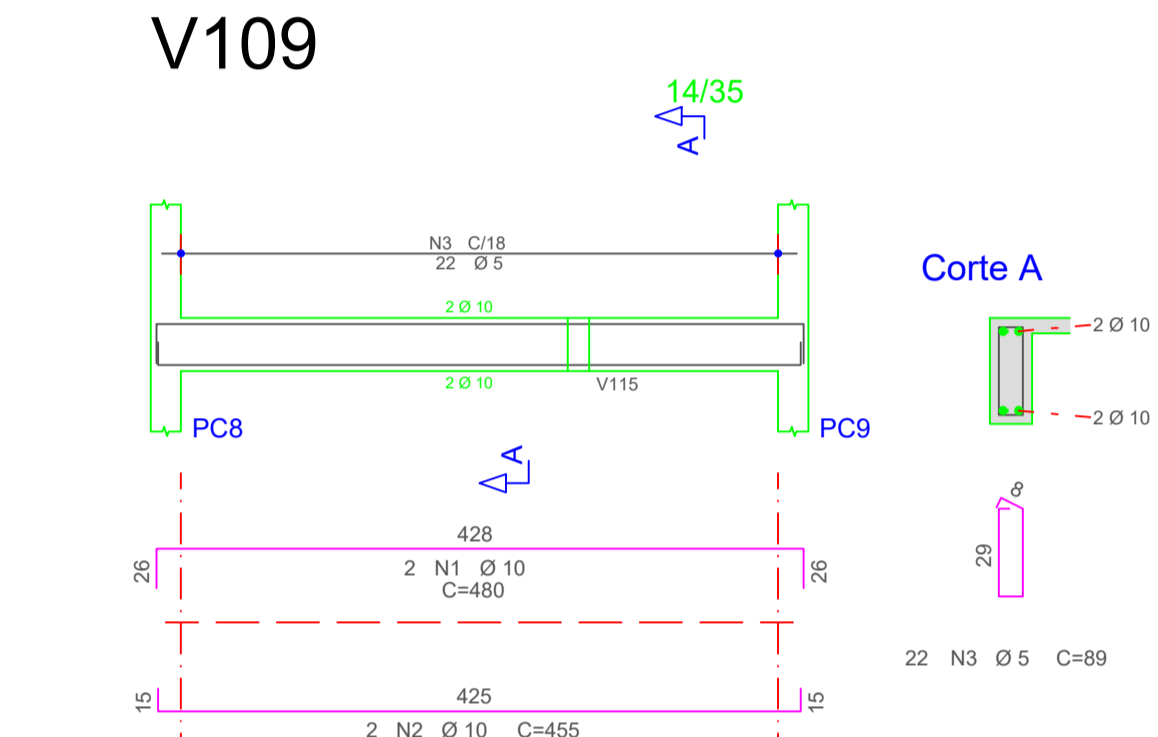
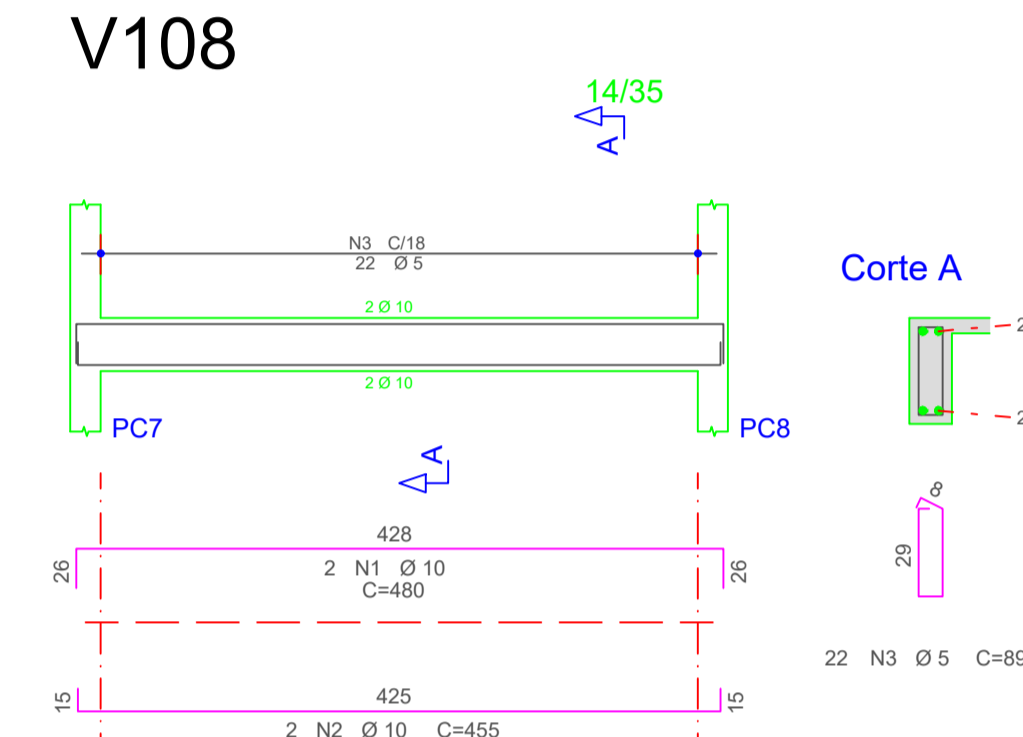
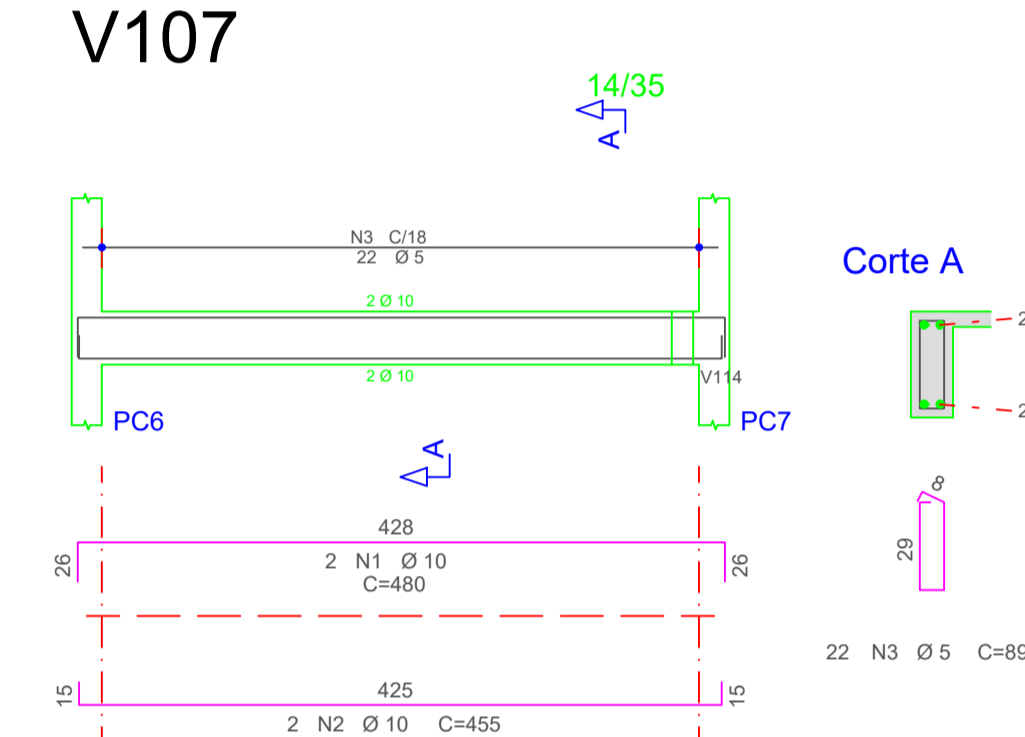
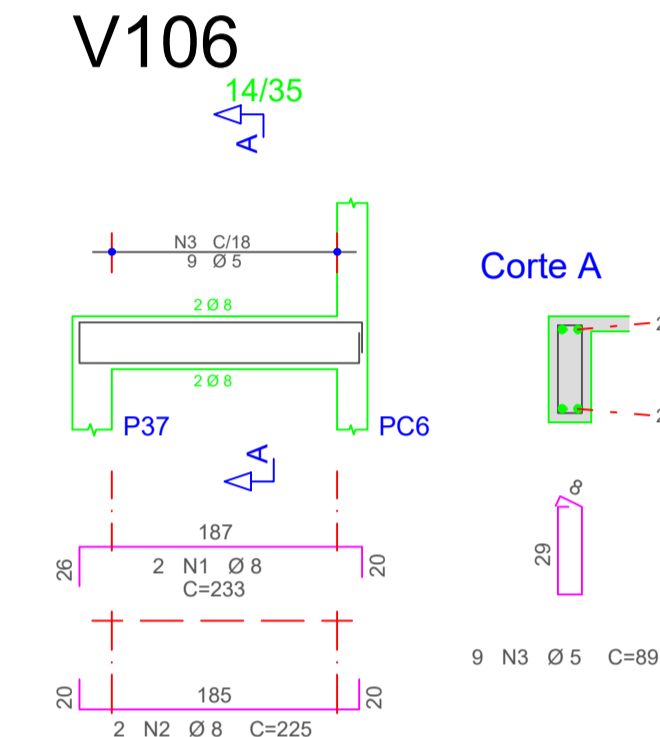
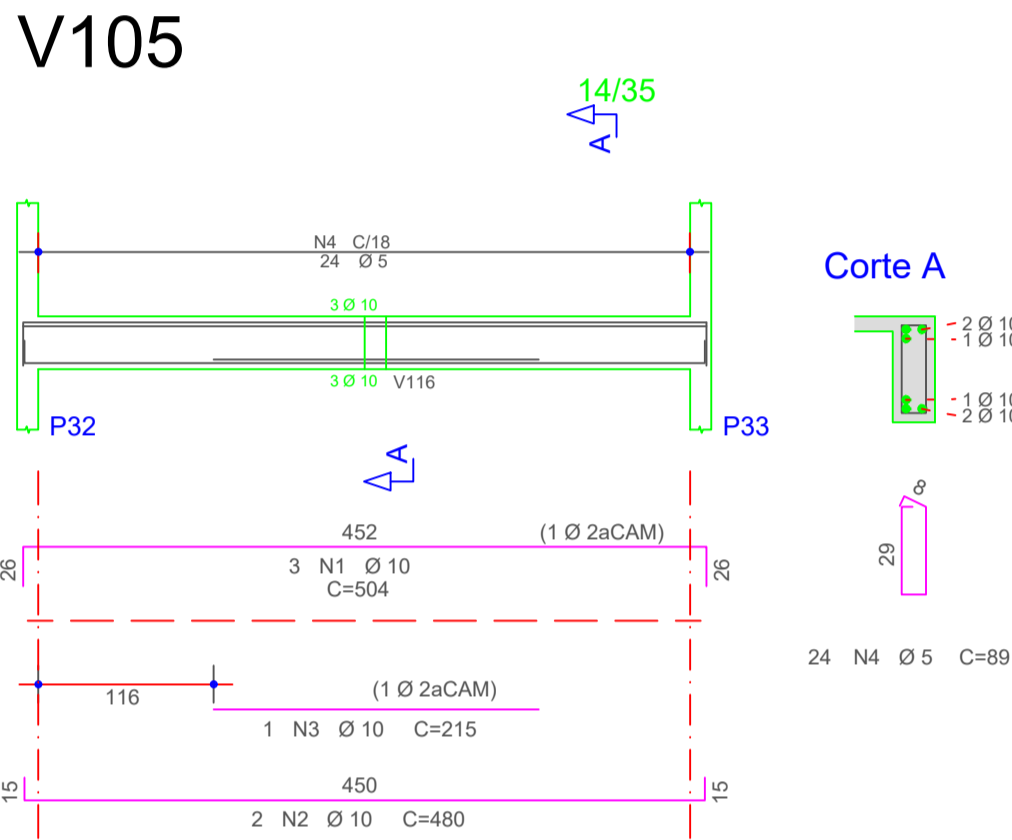
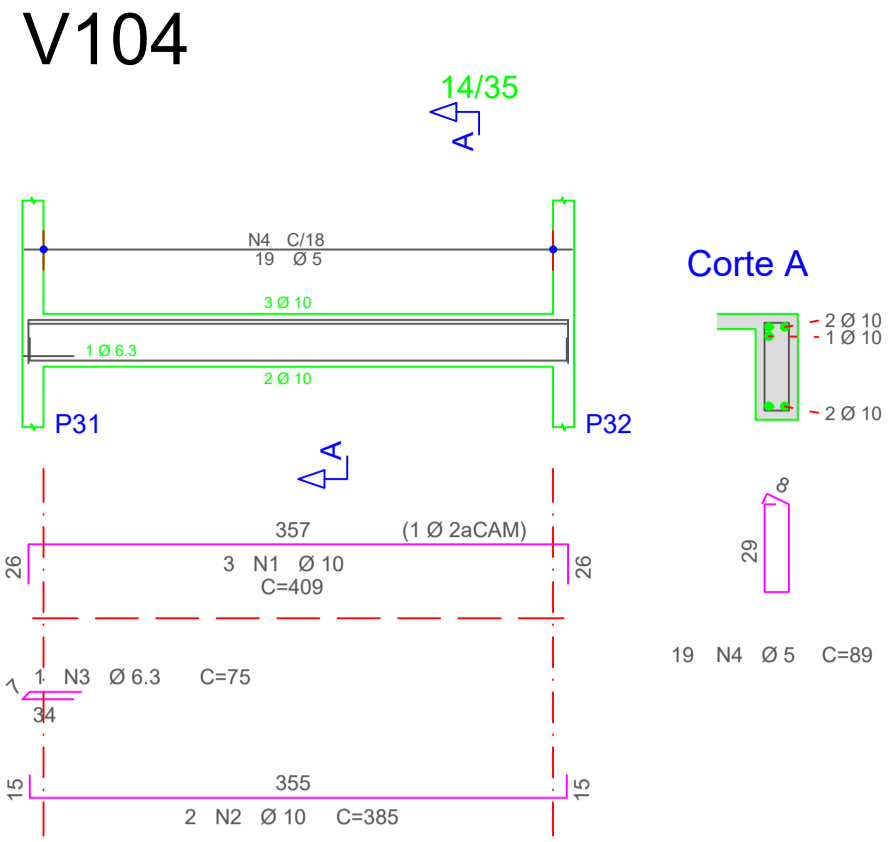
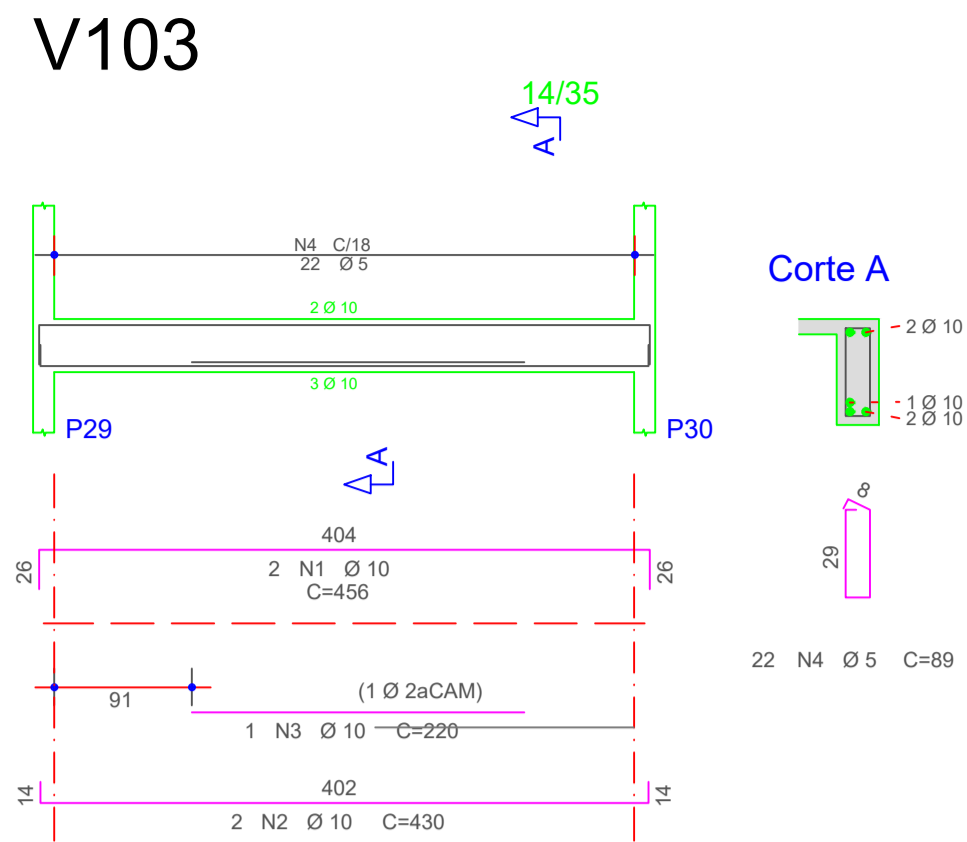
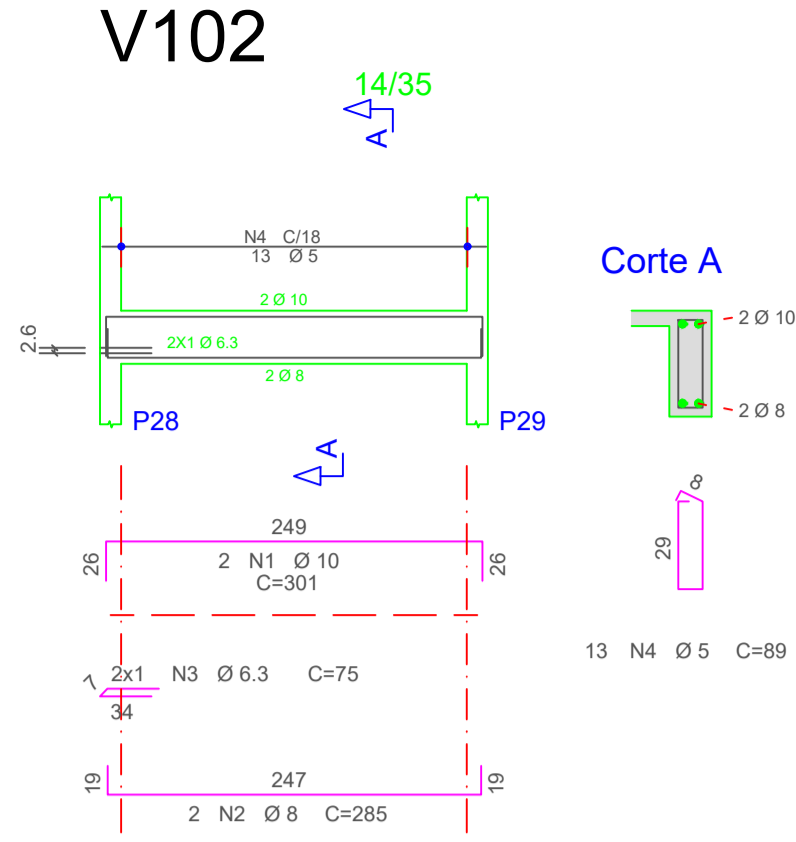
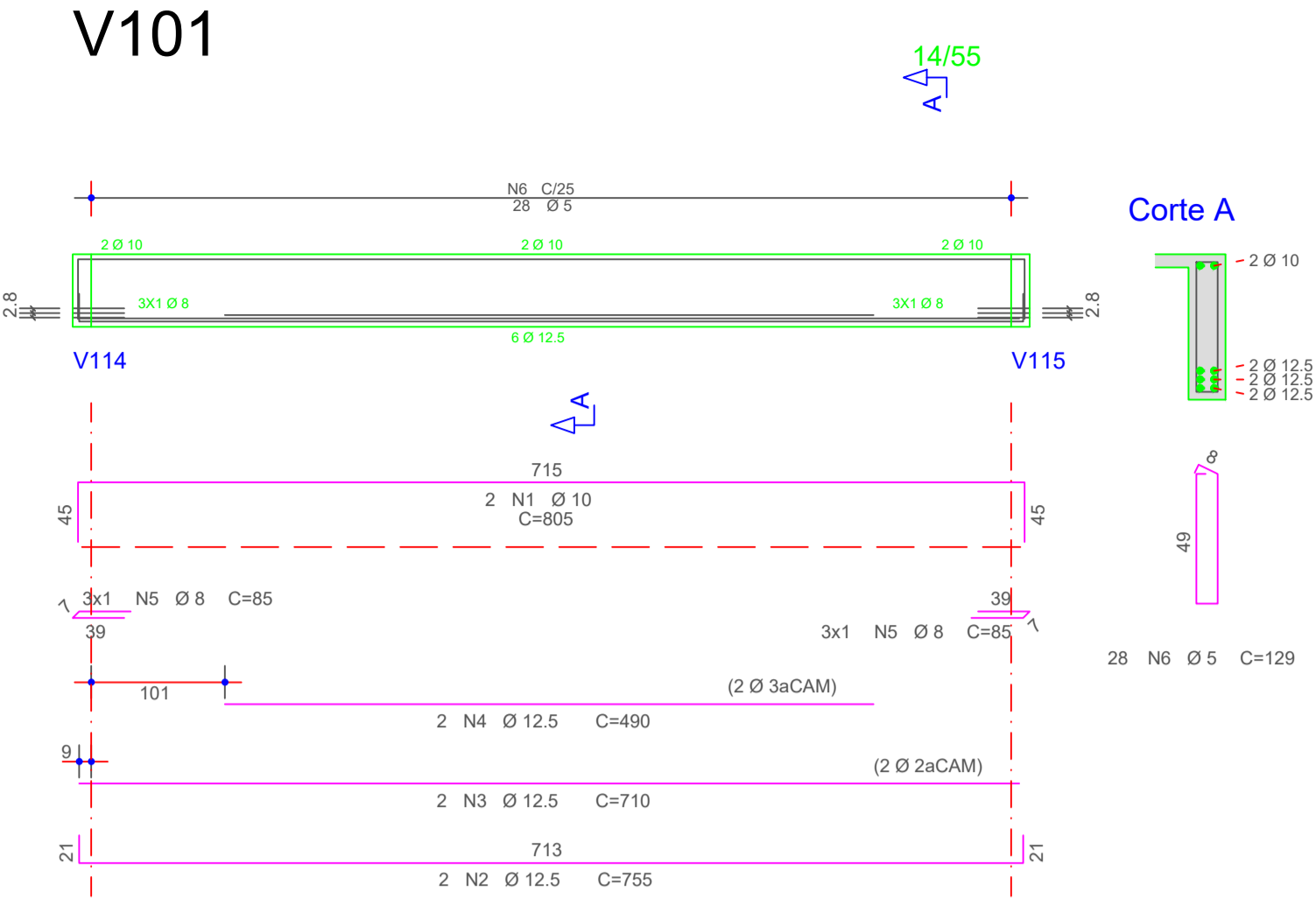


ÇO	POS	BIT (mm)	QUANT	COMPRIMENTO UNIT (cm)	TOTAL (cm)
V101					
50A	1	10	2	805	1610
50A	2	12.5	2	755	1510
50A	3	12.5	2	710	1420
50A	4	12.5	2	490	980
50A	5	8	6	85	510
60A	6	5	28	129	3612
V102					
50A	1	10	2	301	602
50A	2	10	2	570	1140
50A	3	6.3	2	75	150
60A	4	5	13	89	1157
V103					
50A	1	10	2	456	912
50A	2	10	2	430	860
50A	3	10	1	220	220
60A	4	5	3	89	1958
V104					
50A	1	10	2	409	818
50A	2	10	2	385	770
50A	3	6.3	1	75	75
60A	4	5	19	89	1691
V105					
50A	1	10	3	504	1512
50A	2	10	2	480	960
50A	3	10	1	215	215
60A	4	5	24	89	2136
V106					
50A	1	8	2	233	466
50A	2	8	2	225	450
60A	3	5	9	89	801
V107					
50A	1	10	2	480	960
50A	2	10	2	455	910
60A	3	5	22	89	1958
V108					
50A	1	10	2	480	960
50A	2	10	2	455	910
60A	3	5	22	89	1958
V109					
50A	1	10	2	479	958
50A	2	10	2	455	910
60A	3	5	22	89	1958
V110					
50A	1	8	2	240	480
50A	2	8	2	225	450
60A	3	5	9	89	801
V111					
50A	1	8	2	371	742
50A	2	8	2	365	730
60A	3	5	16	89	1424
V112					
50A	1	10	2	395	790
50A	2	10	2	390	780
60A	3	5	18	89	1602
V113					
50A	1	10	2	460	920
50A	2	10	2	215	430
50A	3	6.3	6	85	510
50A	4	10	2	380	2280
50A	5	6.3	4	130	520
60A	6	5	18	89	1602
V114					
50A	1	12.5	2	460	920
50A	2	12.5	2	195	390
50A	3	6.3	1	65	130
50A	4	10	2	380	760
50A	5	6.3	4	130	520
60A	6	5	18	89	1602
V115					
50A	1	10	2	460	920
50A	2	10	2	215	430
50A	3	6.3	6	85	510
50A	4	10	2	380	760
50A	5	6.3	4	130	520
60A	6	5	18	89	1602
V116					
60A	1	5	2	375	750
50A	2	10	2	375	750
50A	3	6.3	4	75	300
60A	4	5	19	89	1691
V117					
50A	1	8	2	371	742
50A	2	8	2	365	730
60A	3	5	16	89	1424

RESUMO AÇO CA 50-60			
ÇO	BIT (mm)	COMPR (m)	PESO (kg)
60A	5	301	46
50A	6.3	22	6
50A	8	68	27
50A	10	221	136
50A	12.5	50	48
Peso Total 60A =			46 kg
Peso Total 50A =			217 kg

Volume de concreto (C-30) = 9,41 m³
Área de forma = 154,00 m²



Visto da Prefeitura Municipal

Projeto de Estrutura

OBRA: QUADRA COBERTA COM VESTIÁRIO
PROPRIETÁRIO: PREFEITURA MUN. DE GEN. CARNEIRO - PR

ENDEREÇO: BAIRRO SÃO JOÃO
LOCAL: GENERAL CARNEIRO - PR

DATA: 23.01.2024
ESCALA: INDICADAS
DESENHO: PABLO CASANOVA
Fone: (0**42) 8813 - 7325
E-mail: pref.eng@hotmail.com

RES.P. TÉCNICO: MARCELA DOS SANTOS GUIMARÃES
Eng. Civil - CREA PR 167294/D

ÁREA: 918,22 m²
TÍTULO: ARMAÇÃO DAS VIGAS DO NÍVEL 2.93M

PREFEITURA MUNICIPAL DE GENERAL CARNEIRO - ESTADO DO PARANÁ

PRANCHA: 10 16